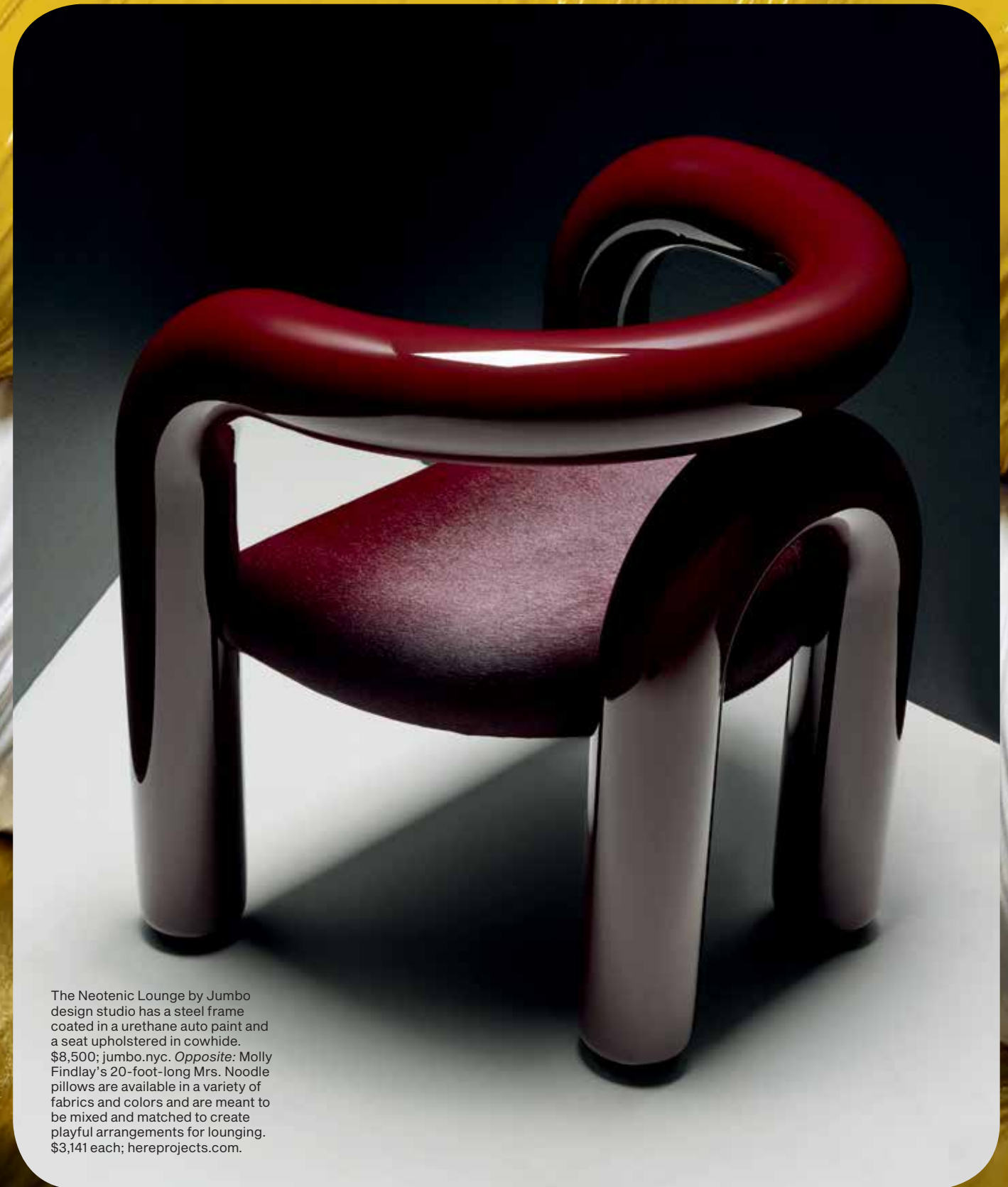


# TOTALLY

CURVY CHROME, ROUNDED EDGES,  
PLUMP UPHOLSTERY—DESIGNERS HAVE FALLEN  
IN LOVE WITH ALL THINGS BULBOUS.

PHOTOGRAPHS BY PATRICIA HEAL

# TUBULAR



The Neotenic Lounge by Jumbo design studio has a steel frame coated in a urethane auto paint and a seat upholstered in cowhide. \$8,500; [jumbo.nyc](http://jumbo.nyc). *Opposite:* Molly Findlay's 20-foot-long Mrs. Noodle pillows are available in a variety of fabrics and colors and are meant to be mixed and matched to create playful arrangements for lounging. \$3,141 each; [hereprojects.com](http://hereprojects.com).



From left: The Tube Chair by Objects of Common Interest and designer Falke Svaton is covered in a bouclé. \$8,500; 1stdibs.com. With its bulbous armrests, Marcel Wanders's Montgolfière sofa for Roche Bobois gives a nod to the Montgolfier brothers, inventors of the hot-air balloon. \$8,760; roche-bobois.com. The design duo Müsing-Sellés created this metallic-lacquered coffee table for Set No. 5. \$2,500; 1stdibs.com. Valerio Sommella's Ionico vase for Calligaris was inspired by classical Greek architecture. \$255; calligaris.com.



SET DESIGN BY THERESA RIVERA



The whimsical 1980s designs of the Memphis Group inspired the chrome-plated steel Dorothy and Sophia lamps by Another Human. \$2,900 each; [anotherhuman.la](http://anotherhuman.la).  
*Opposite:* Steven Bukowski's Bubble Side Table, which features a soft-close drawer, comes in lacquer or natural wood. \$3,400; [1stdibs.com](http://1stdibs.com).

